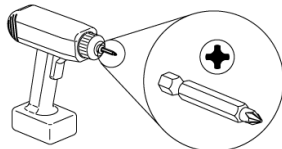


# LOK TRAINING TABLES

## Assembly Instruction for Tilt T-Base on Half Round Top

### Recommended tools



#2 Phillips Head  
#3 Phillips Head



1/8" Drill Bit

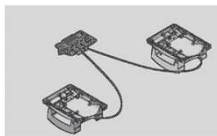


Measuring Tape

### Hardware enclosed



Set of (2) Bases



Tilt Mechanism  
Assembly



#12 x 1"  
Panhead  
Screws  
Qty= 16



#1/4-20 x  
1/2" Panhead  
Machine  
Screws  
Qty= 8



#8x5/8"  
Panhead  
Screw  
Qty= 6



Cable Retainer  
Qty= 6

**NOTE: all screws provided must be installed for proper installation and compliance with product warranty.**

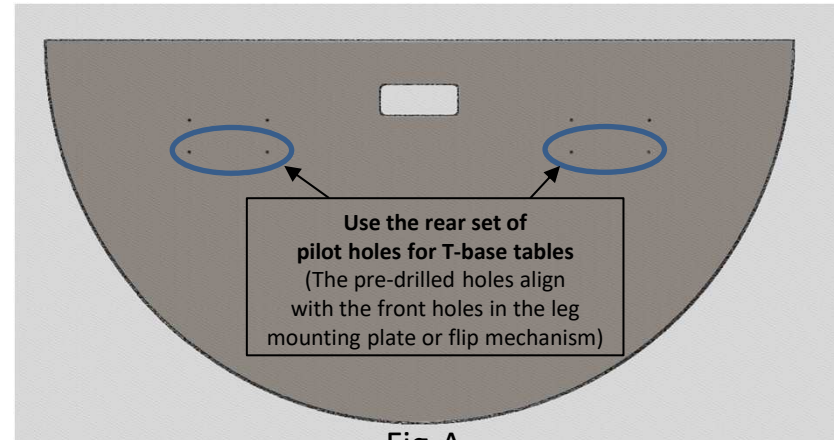


Fig-A

1. Place work surface bottom side up on a non-marring surface
2. Place the flip mechanism assembly on the work surface as shown, aligning the front screw holes in the flip assembly with the pilot holes in the top per Fig-A & Fig-B. Mark the positions for the remaining mounting screw locations. Activate the tilt release handle to access holes in center of mount plate. There are a total of 16 holes (see Fig-C & Fig-D). Drill pilot holes 1/8"Ø x 1/2" deep in screw locations marked.
3. Use the (16) #12x1" panhead screws provided with the flip mechanism to secure the mechanism to the top.
4. Locate the tilt release handle per Fig-E. Handle is centered side-to-side. Mark and drill pilot holes. Use (4) #12x1" panhead screws to attach.
5. Use (6) cable retainer clips and (6) #8x5/8" panhead screws to secure cables to bottom of work surface.
6. Align the mounting plate of leg with holes in the flip mechanism per Fig-F. Use (4) 1/4-20x 1/2" machine screws to attach each leg.

# LOK TRAINING TABLES

## Assembly Instruction for Tilt T-Base on Half Round Top

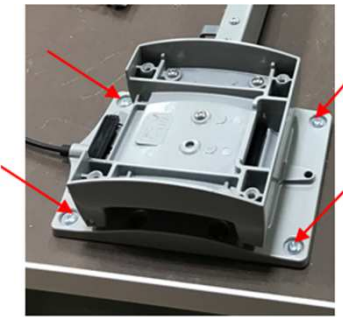


Fig-C

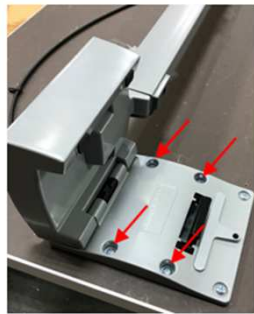


Fig-D

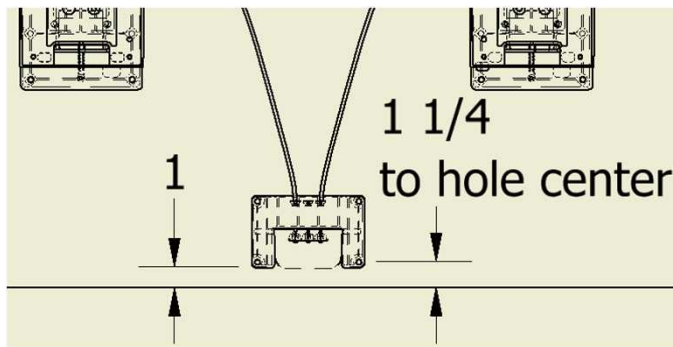


Fig-E

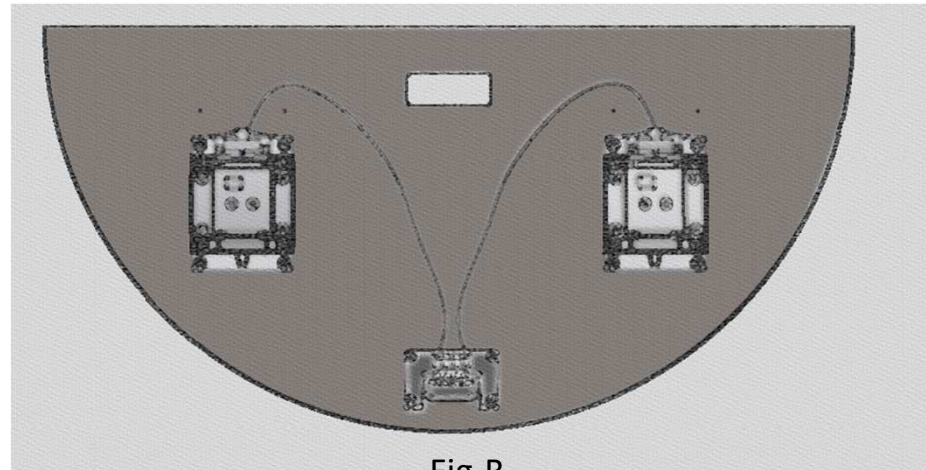


Fig-B

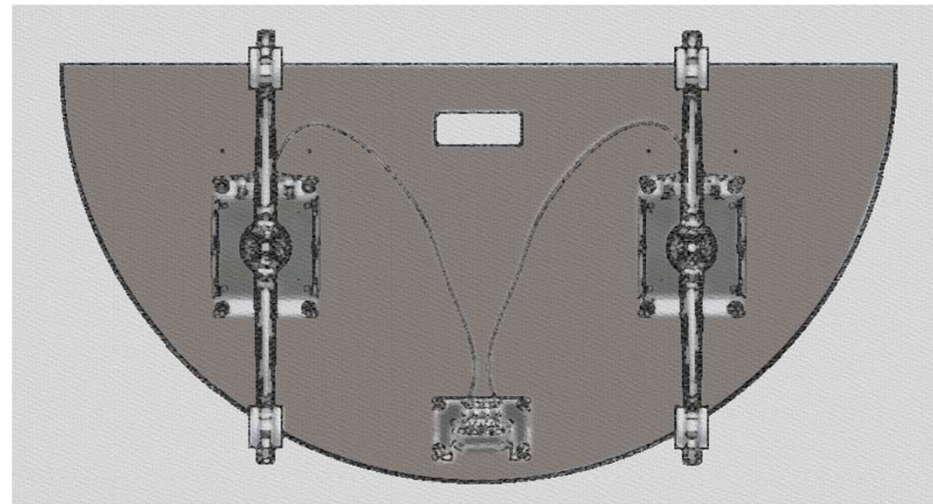


Fig-F